



**54Mbps Wireless  
Network PCI Adapter**

QUICK START GUIDE

# Installing Your 54Mbps Wireless Network PCI Adapter

## Utility installation

Before insert PCMCIA Adapter into the PCMCIA slot of your computer, please install the Utility Program first.

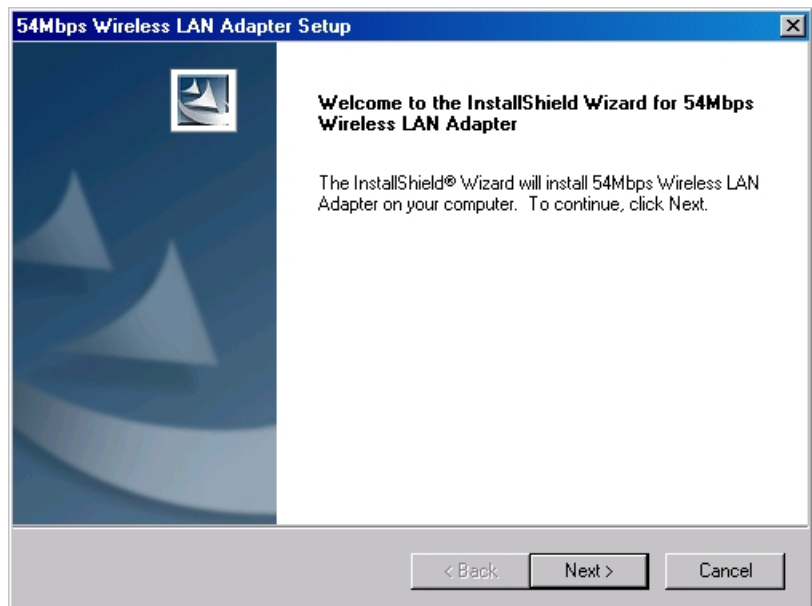
1. Make sure that the card is not inserted in PCI slot
2. Turn on the PC and insert the installation Cd-Rom
3. Launch the installation utility in the D:\Driver directory

### NOTE:

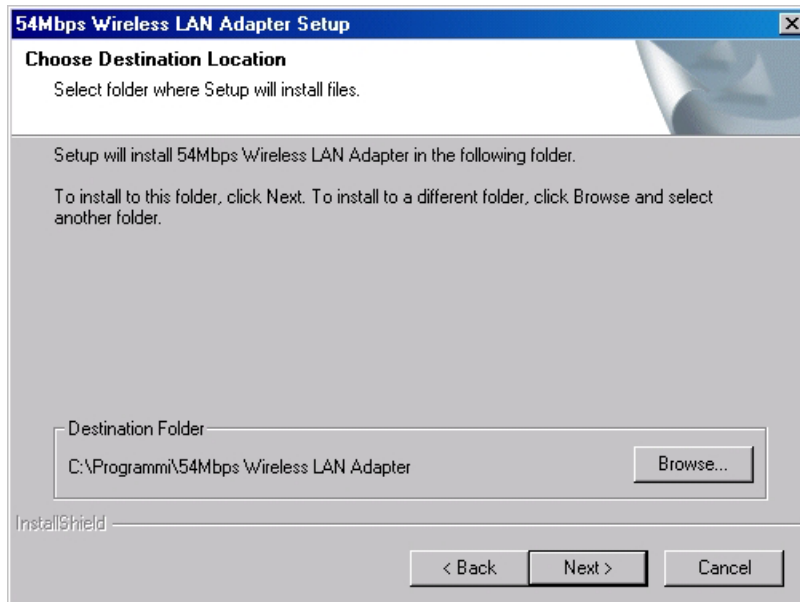
All the captured images of installation mentioned in this user's manual were based on Windows XP operating system. For installation on other Windows OS, e.g. Windows 98 SE, all the procedures remains the same.

Follow the installation procedure:

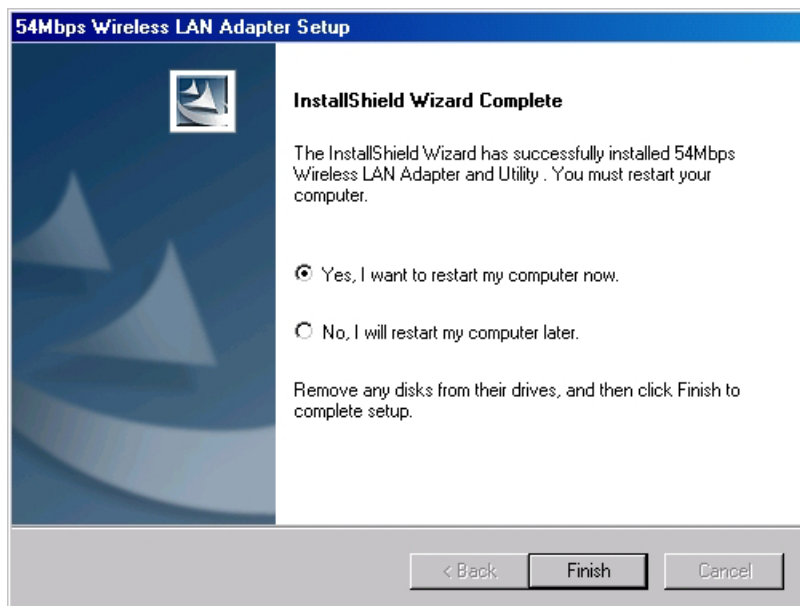
InstallShield Wizard starts. Click "**Next**" to continue.



Click "**Next**" to install the program files in the default folder.



Select the second option, and click "**Finish**" to complete the installation.



Please make sure **TURN OFF** your computer and remove the power cord from your PC. Open the computer case and then please insert the Wireless PCI Adapter into the empty PCI slot of your computer system. Once the Wireless PCI Adapter is installed, place the computer case back. Turn **ON** your computer and continue with **Installation setup**.

## Driver installation

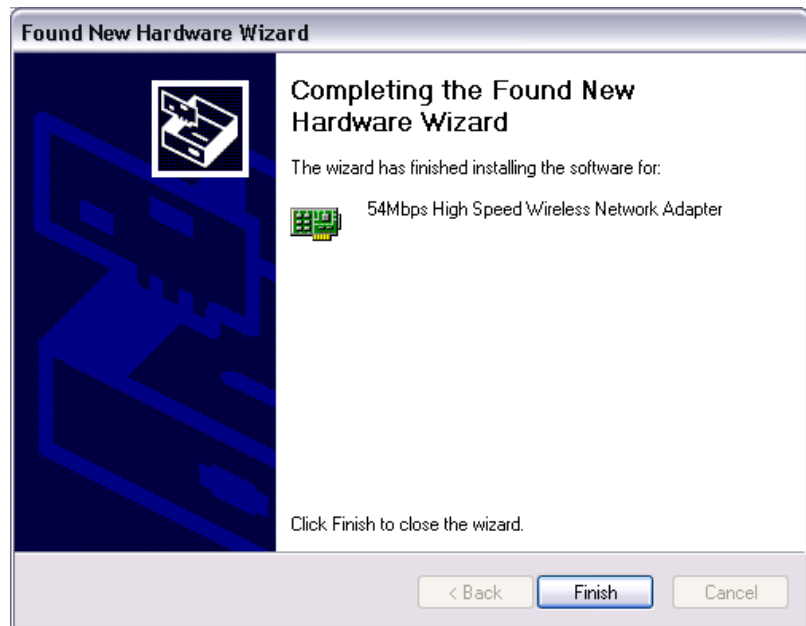
Select the second option and click "**Next**" to continue.



Click "**Continue Anyway**" to continue



Click "**Finish**" to complete new hardware installation.



After successful installation, a utility program icon will appear on your desktop screen. To launch the utility, simply double-click the icon.



If the predefined manager of the Wireless networks is that one embedded in Windows disable it in order to use the management tool supplied with the product.